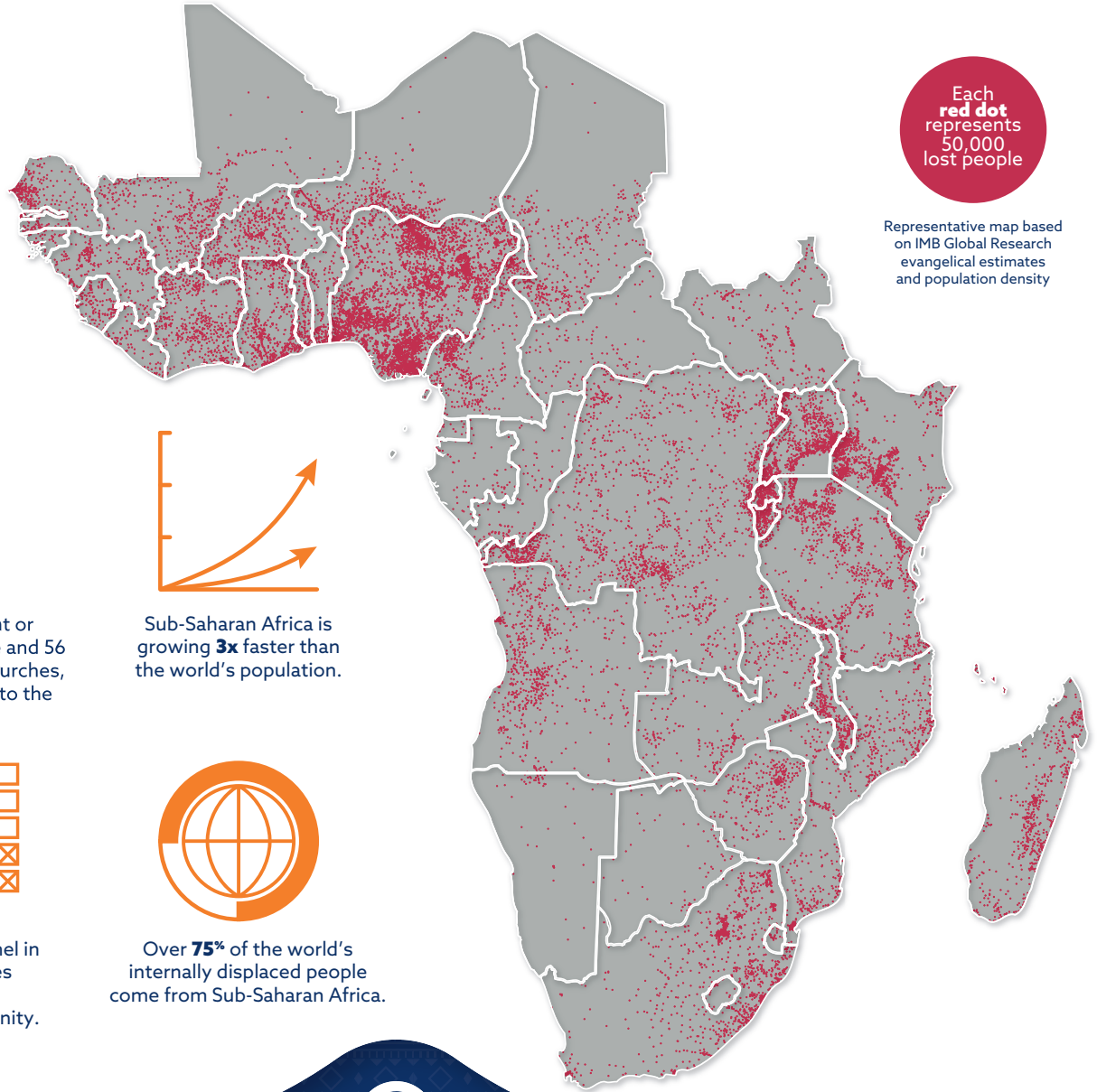


SUB-SAHARAN AFRICAN PEOPLES

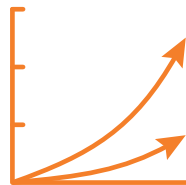


Each red dot represents 50,000 lost people

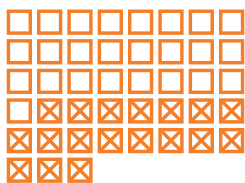
Representative map based on IMB Global Research evangelical estimates and population density



463 people groups do not have a consistent or significant gospel presence and 56 of those have no known churches, believers, or even access to the gospel at all.



Sub-Saharan Africa is growing **3x** faster than the world's population.



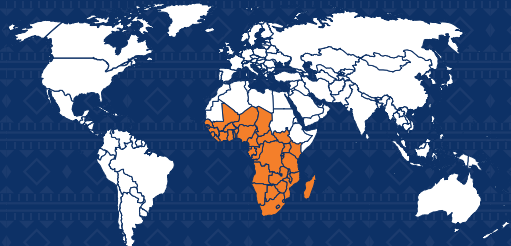
We do not have personnel in **18 of the 43** countries which make up the Sub-Saharan African Affinity.



Over **75%** of the world's internally displaced people come from Sub-Saharan Africa.



INTERNATIONAL MISSION BOARD



SUB-SAHARAN AFRICAN HIGHLIGHTS

- 134,700** people heard the gospel
- 8,539** new believers
- 1,199** baptisms
- 34,145** individuals disciplined
- 7,681** leaders trained

LEARN MORE AT IMB.ORG/FAST-FACTS